



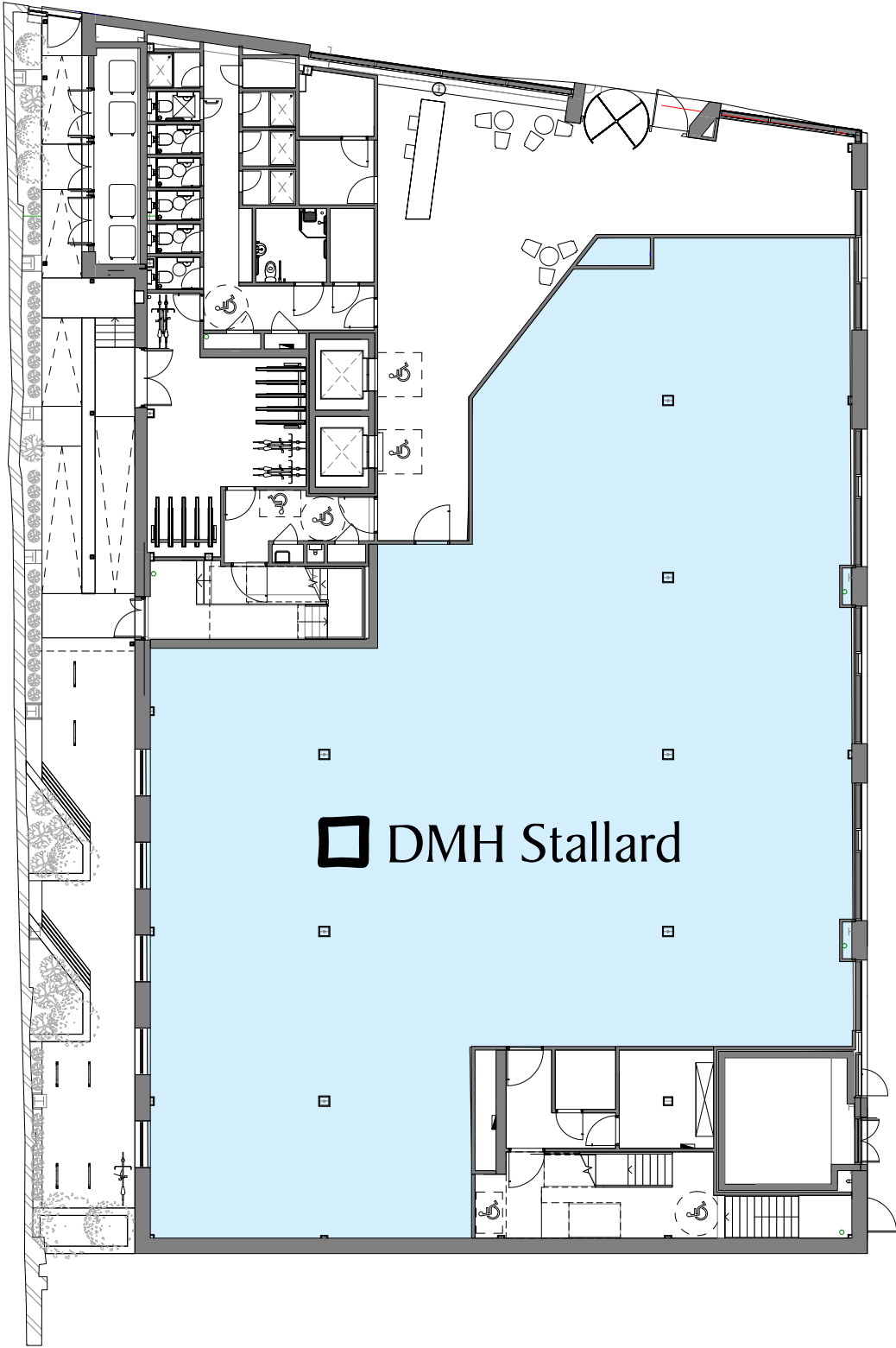
THE  
PORTLAND  
BUILDING  
BRIGHTON

FLOOR PLANS

ACCOMMODATION

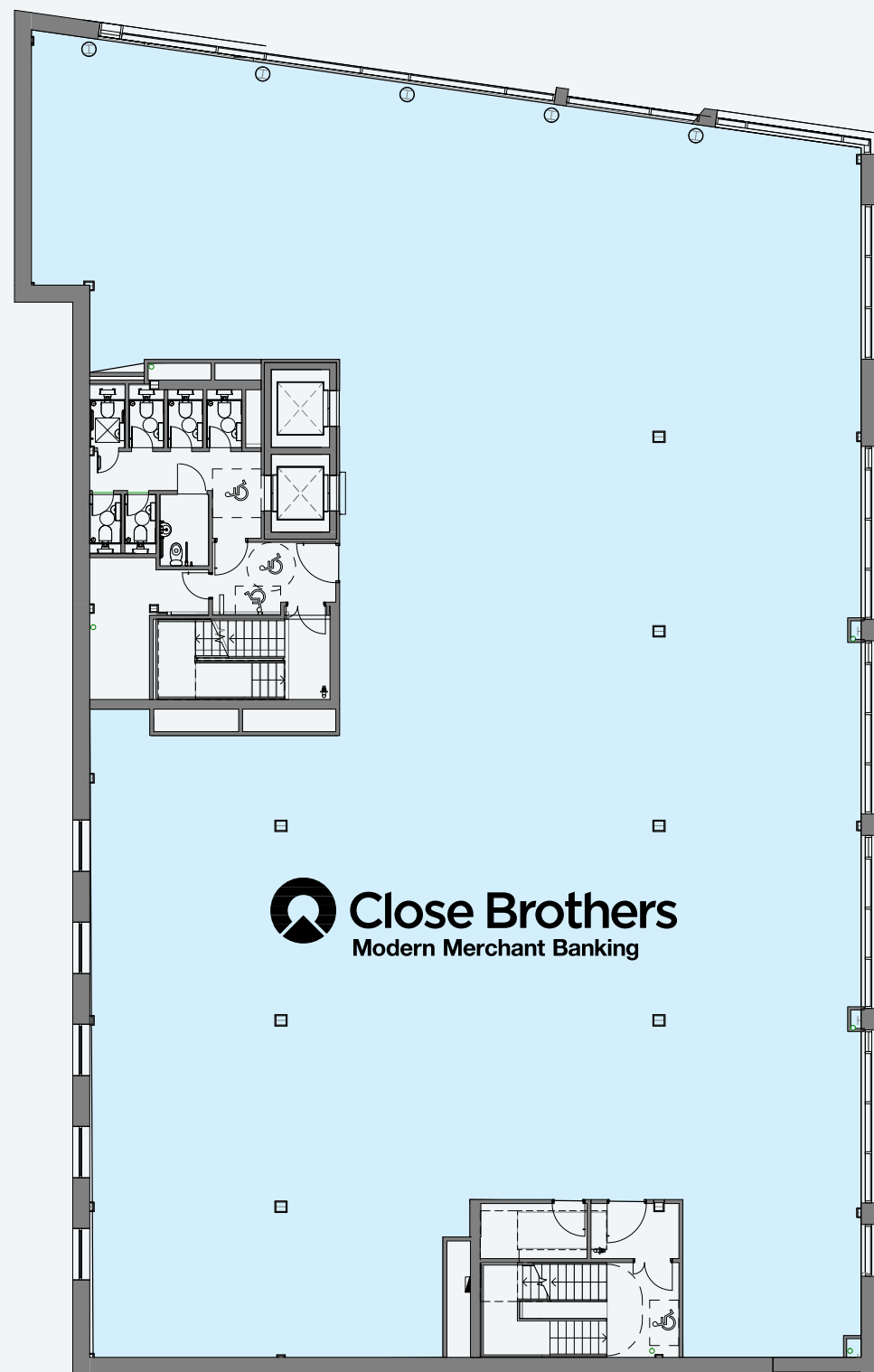
LEVEL		AVAILABILITY	SQ M	SQ FT
4th floor	Communal Terrace	n/a	69.6	750
3rd floor	Open Plan Office	Available	639.7	6,886
2nd floor	Portland Street Terrace	iNIZIO evoke	70.7	762
2nd floor	Open Plan Office	iNIZIO evoke	724.1	7,794
1st floor	Open Plan Office	Close Brothers Modern Merchant Banking	838.4	9,025
Ground	Open Plan Office	DMH Stallard	579.7	6,240
TOTALS			2,782.03	29,945

Measured on an IPMS 3 basis in accordance with the RICS Property Measurement



FLOOR PLANS | GROUND FLOOR  
579.7 SQ M / 6,240 SQ FT

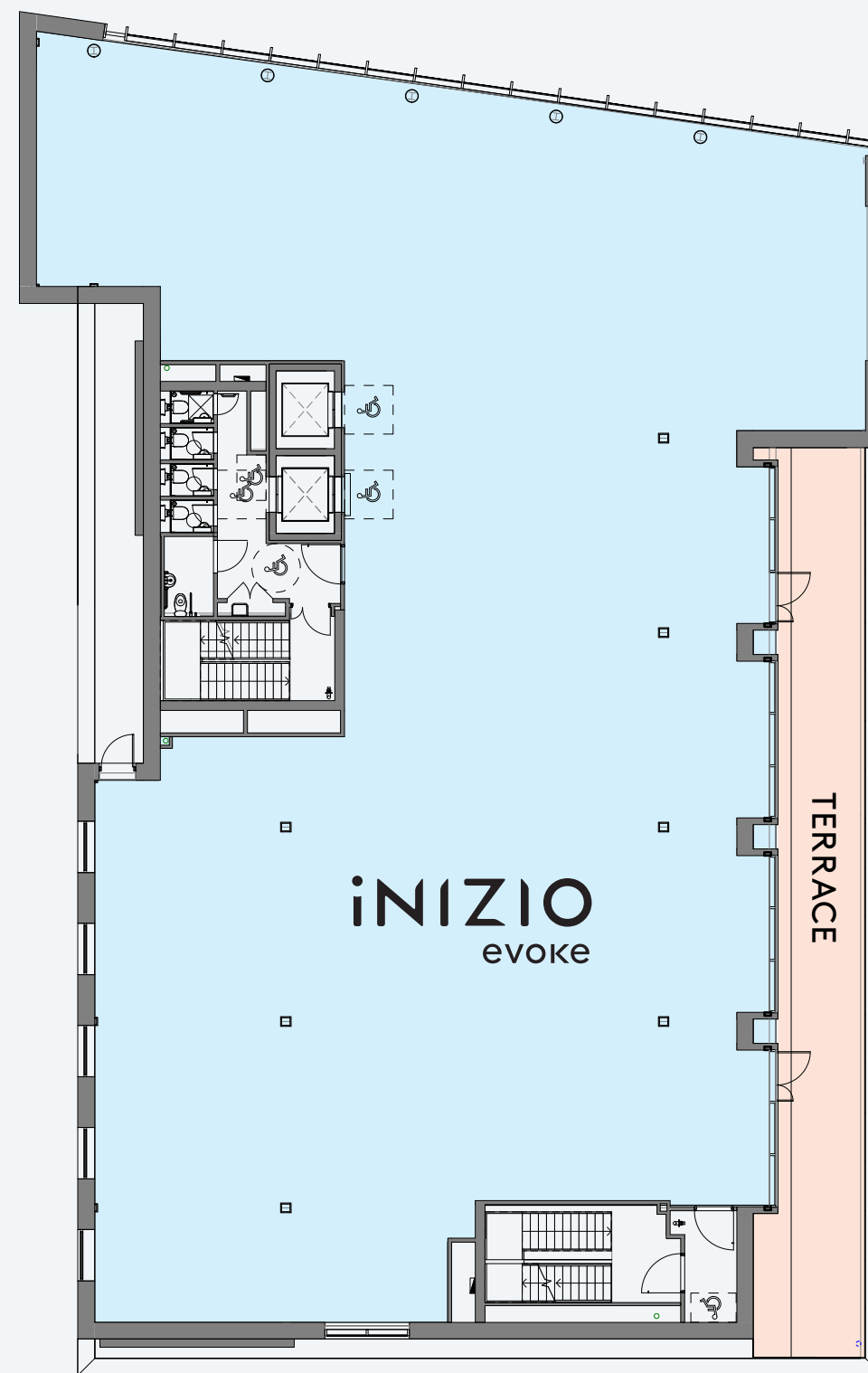
Not to scale and indicative only.



FLOOR PLANS | **FIRST FLOOR**

838.4 SQ M / 9,025 SQ FT

Not to scale and indicative only.

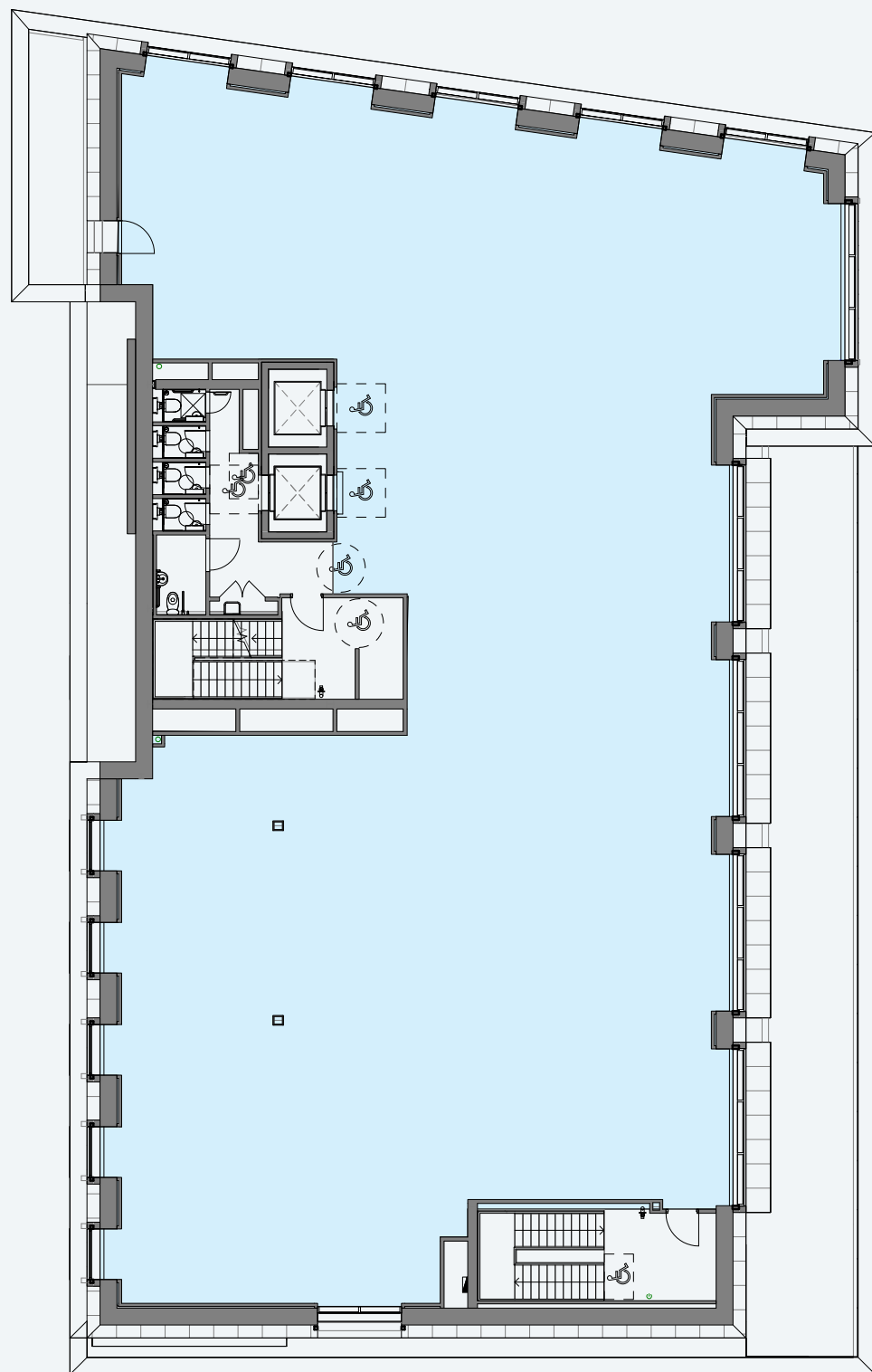


FLOOR PLANS | **SECOND FLOOR**

724.1 SQ M / 7,794 SQ FT

**TERRACE** 70.7 SQ M / 762 SQ FT

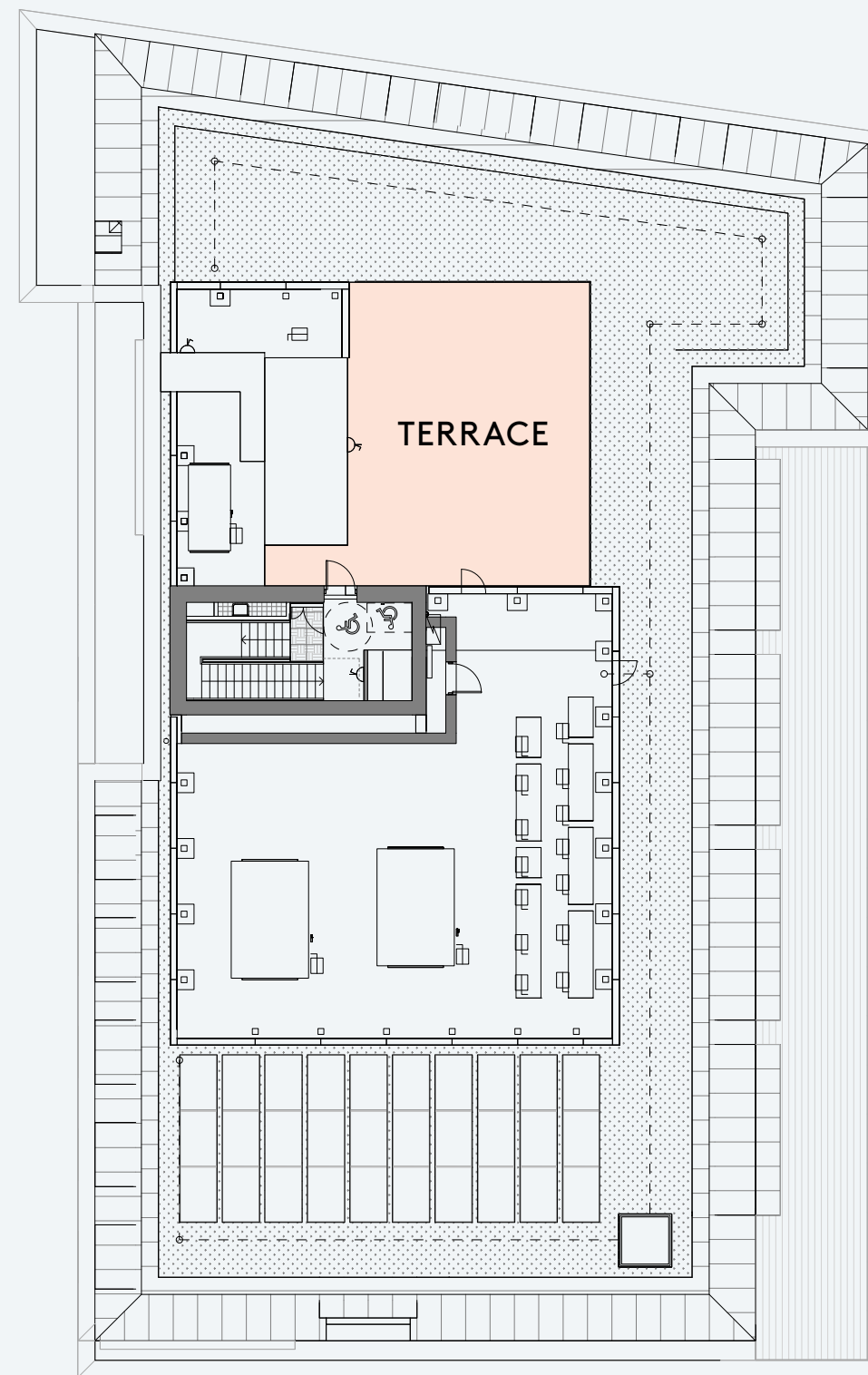
Not to scale and indicative only.



### FLOOR PLANS | THIRD FLOOR

639.7 SQ M / 6,886 SQ FT

Not to scale and indicative only.



### FLOOR PLANS | ROOF TERRACE

69.6 SQ M / 750 SQ FT

Not to scale and indicative only.

# INDICATIVE LAYOUT

## 3RD FLOOR - 6.886 IPMS



### 66 WORK STATIONS

Desk sizes: 1400mm x 800mm

611 m <sup>2</sup> NIA	
1:12	50 persons
1:10	61 persons
1:08	76 persons

**KEY** Landlord Area Circulation Reception Workstations Breakout/Collaboration Meeting Rooms Kitchenette Storage/Comms Multi Function Room

Not to scale and indicative only.



THE  
PORTLAND  
BUILDING  
BRIGHTON

## CONTACT



James Bryant  
Director

E. [jbryant@shw.co.uk](mailto:jbryant@shw.co.uk)  
T. +44 1273 876 252  
M. +44 7947 373 875

Emma Ormiston  
Partner

E. [eormiston@shw.co.uk](mailto:eormiston@shw.co.uk)  
T. +44 1273 876 203  
M. +44 7947 373 565



Jack Riley  
Partner

E. [jack.riley@knightfrank.com](mailto:jack.riley@knightfrank.com)  
T. +44 20 7861 5375  
M. +44 7867 002 484

Tom Slater  
Associate Partner

E. [tom.slater@knightfrank.com](mailto:tom.slater@knightfrank.com)  
T. +44 20 3995 0775  
M. +44 7870 803 314